



Delivering Confidence Through Innovation, Quality and Value Since 1976



2016 Wand Handle Repair Instructions & Parts List

Updated 9/11/18



2016 Wand Handle Repair Instructions and Parts List

2016 New Style Wand Assembly - Part Number 52200



This style wand assembly is field serviceable. If there are any problems with wand function, most likely it can be repaired in the field with basic tools, and some key spare parts.

Suggested Spare Parts & Tools

To keep with the machine to minimize downtime:

- 52206 Wand Cable
- 52208 Wand Switch
- 51656 Terminal Strip
- 1/8" Allen Wrench
- 5/32" Allen Wrench
- Small Philips Screw Driver
- Flat Blade Screw Driver
- Wire Stripper/Cutter

New Hose and Wand Part Numbers

- 52400 – 15' Heated hose
- 52400K – 15' Heated hose w/ harness ext.
- 52405 – 18' Heated hose
- 52405K – 18' Heated hose w/ harness ext.
- 52211 – Harness ext.
- 52200 – 48" Wand assembly



15' Heated Hoses are usually used on EZ Series II Machines
18' Heated Hoses are used on Super Shot Machines



2016 Wand Handle Repair Instructions and Parts List

Notes for Intermixing Different Styles of Wands

When installing an old wand onto a new hose you will need to use the 52211 harness extension.

No harness extension is needed when installing a new wand onto an old hose, the new wand cable is long enough.



Old Wand to New Hose



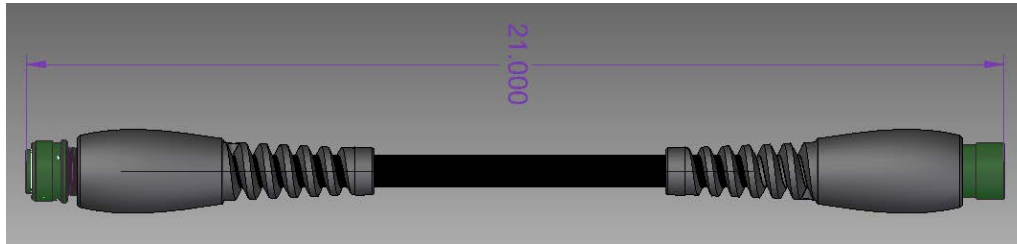
Old Wand to New Hose with 52211 Extension Harness



*Old strain relief shown on 52211

52211 – Harness Extension

Approx. 21” long



*New strain relief shown



2016 Wand Handle Repair Instructions and Parts List

New Wand to Old Hose



*Old strain relief shown on 52206 wand cable



Replacement Part Number List

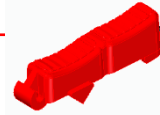
52201LN – Wand handle left side



52201RN – Wand handle right side w/ inserts



52202N – Trigger actuator (2 finger lever)



52203N – Trigger lock



52204 – Wand tube



52206 – Cable assembly



52207 – Actuator spring



Replacement Part Number List (Con't)

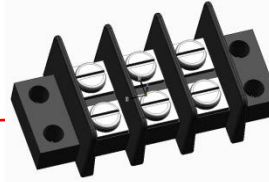
52208 – Wand switch (electric switch)



52209 – Actuator pin



51656 – Terminal strip



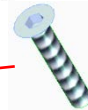
29001 – Pan head screw (2) needed for 52208



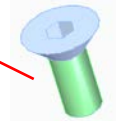
28824 – Pan head screws (2) needed for 51656



28750 – Socket head screw (7) needed for handle



32305 – Socket head screw (4) needed for handle



Replacement Part Number List (Con't)

50278 – Long Clamp On Tip Guard

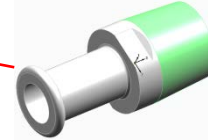
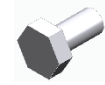
28700 – 1/4-20 x 1/2" Bolt

50270 – Duck Bill Valve with Slot

26084 – Gear Clamp, Mini #12

51756 – Adapter, Duck Bill, 5/8" Tube

50277 – Wand Tip Warning Decal

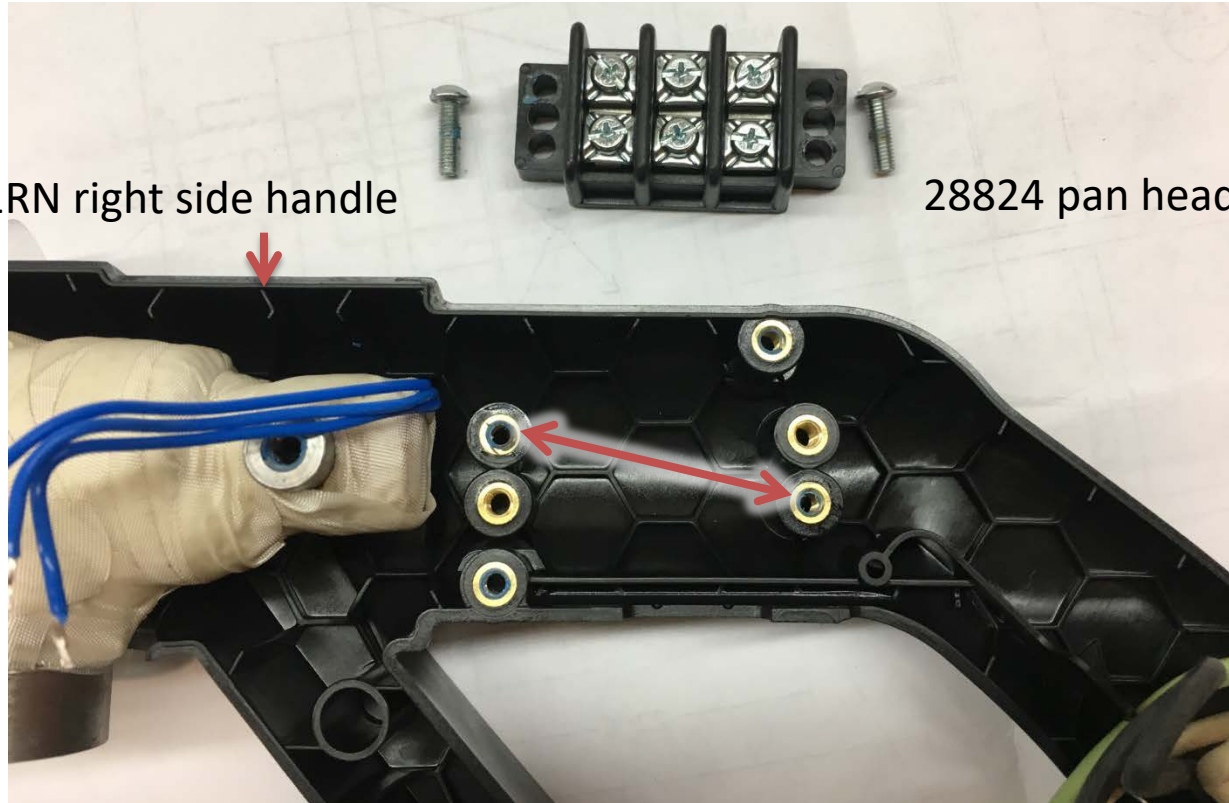


Installing the Terminal Strip

51656 terminal strip

52201RN right side handle

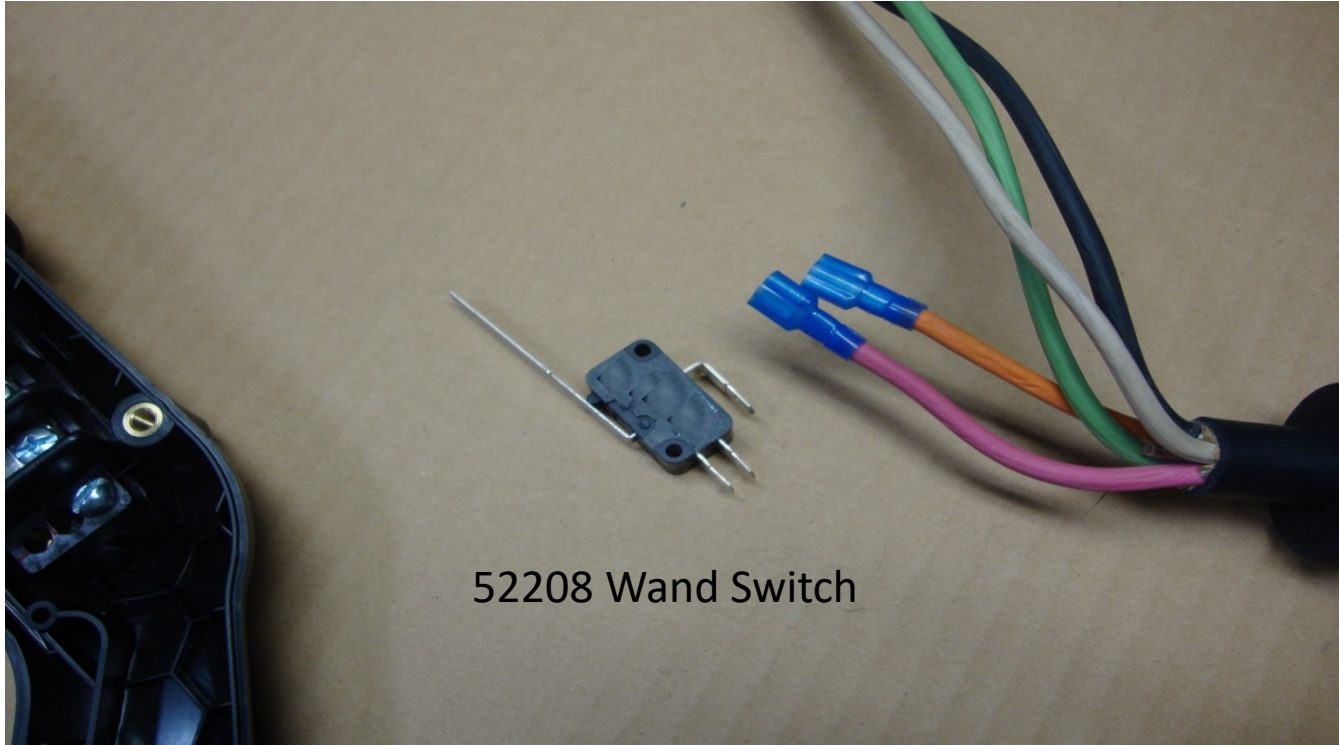
28824 pan head screws



Terminal Strip Location

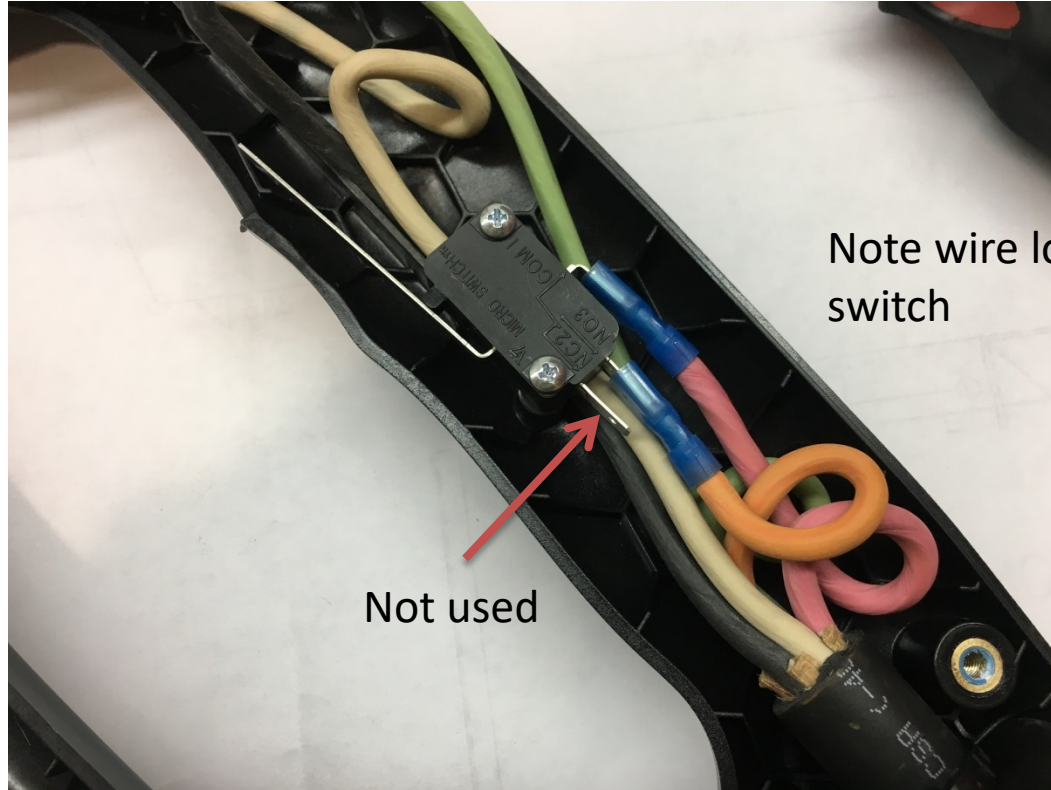


Switch Details

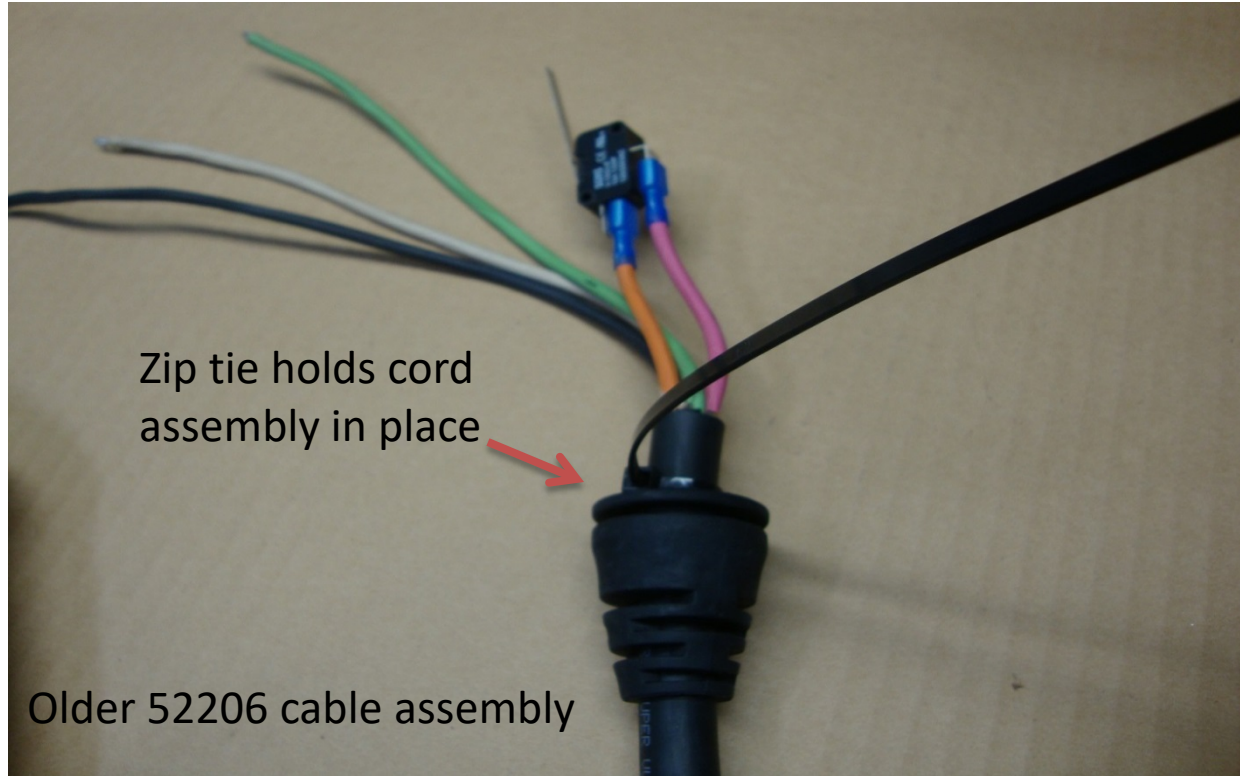


52208 Wand Switch

Wire Connections on Switch

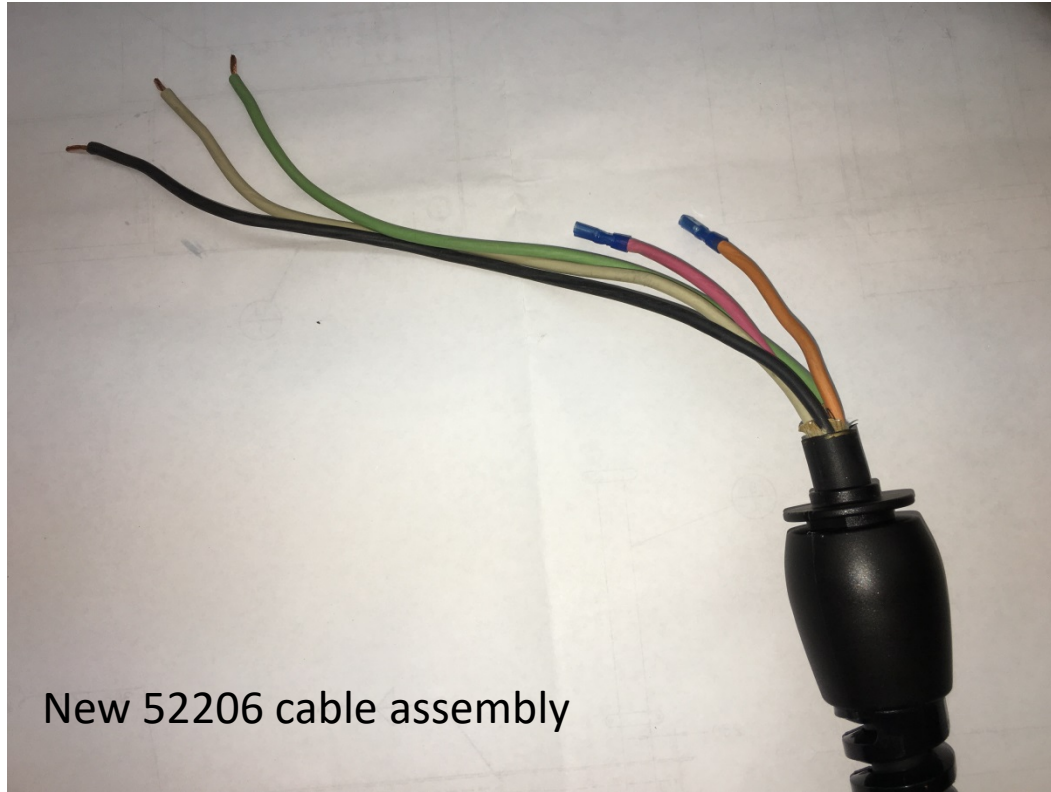


Zip Tie Around Old Style Cable End*



*New strain relief style does not need a zip tie

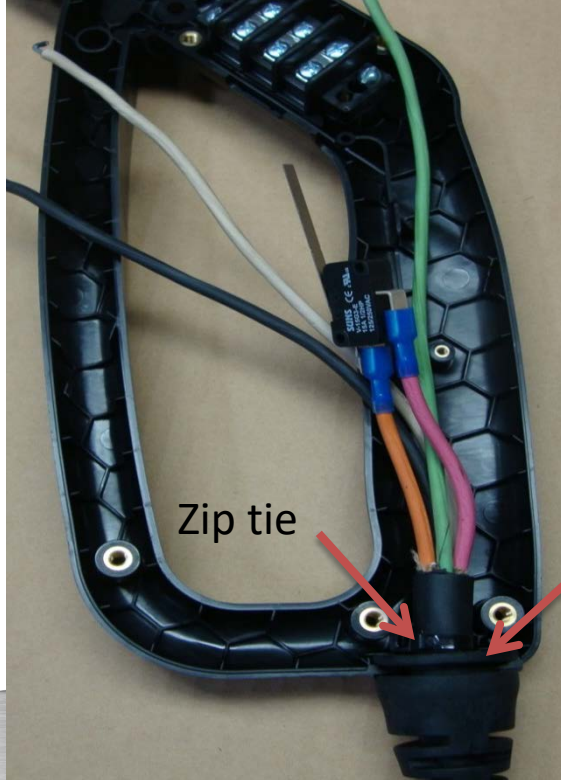
No Zip Tie on New Style Cable End*



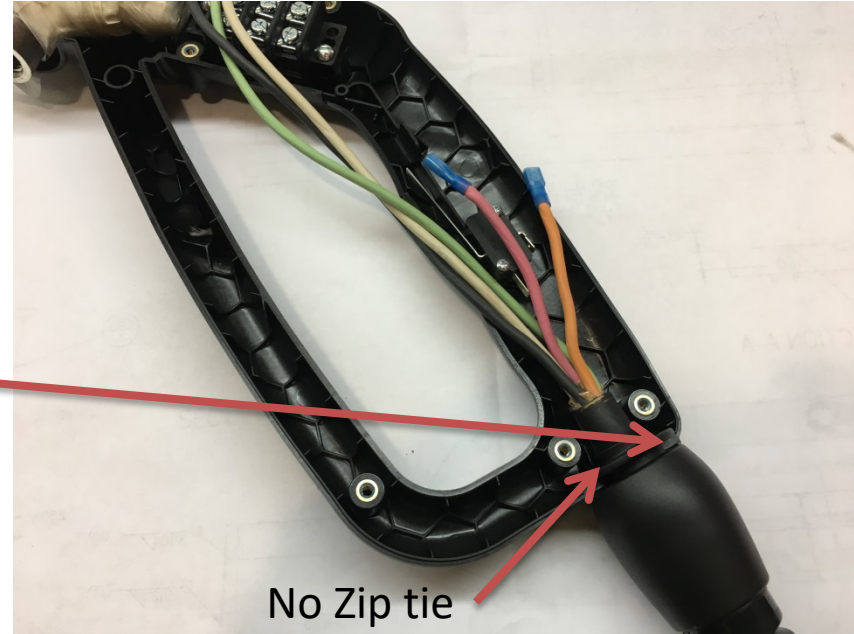
New 52206 cable assembly

*New strain relief does not need a zip tie

Install Cord Grip Into Handle



Make sure flats on cord grip match flats in handle to keep cable from rotating.



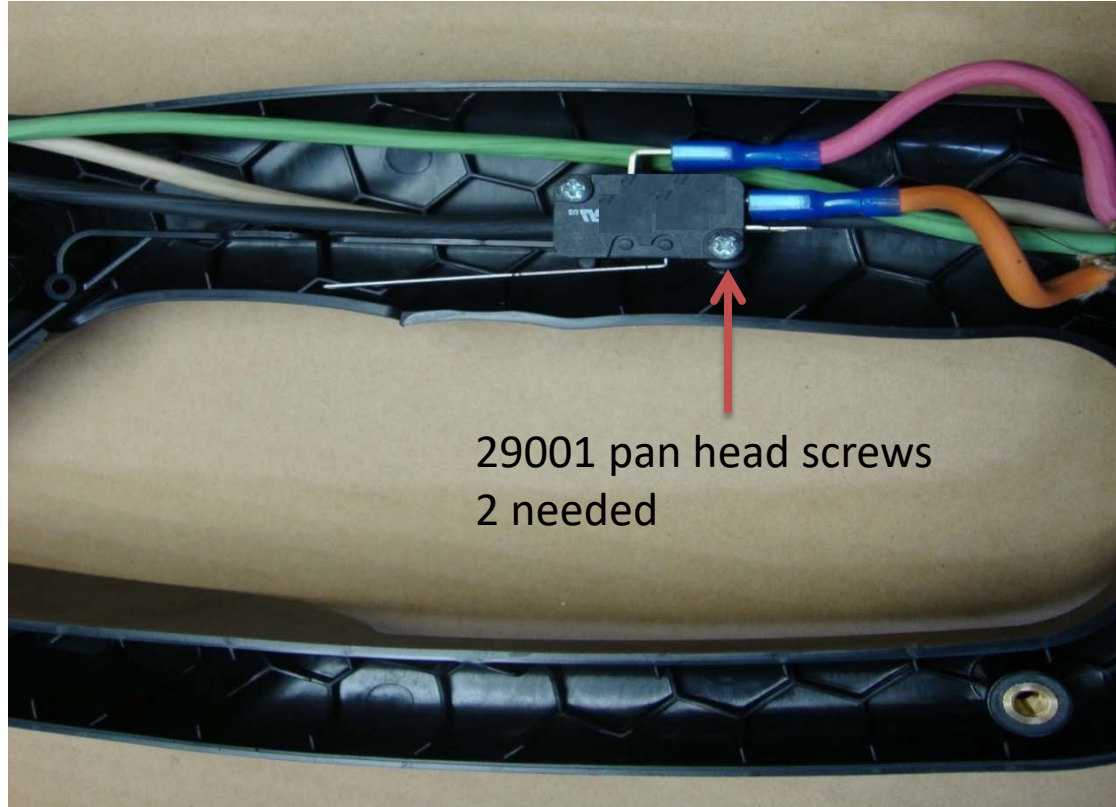
New Style Cable

Old Style Cable w/ Zip Tie

Route 2 Wires Under the Switch (Black and White Wires)



Third Wire Runs Around the Switch (Green Wire)

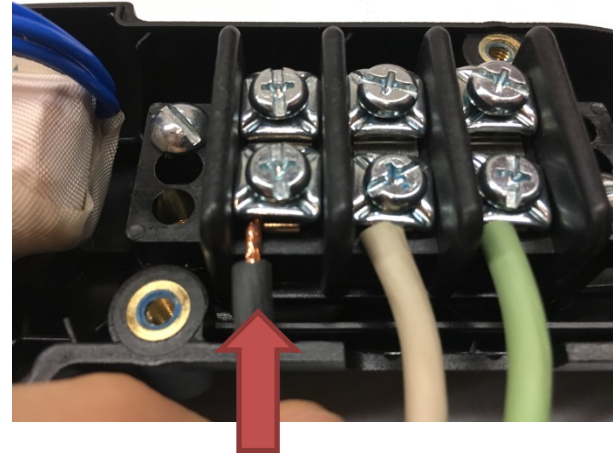
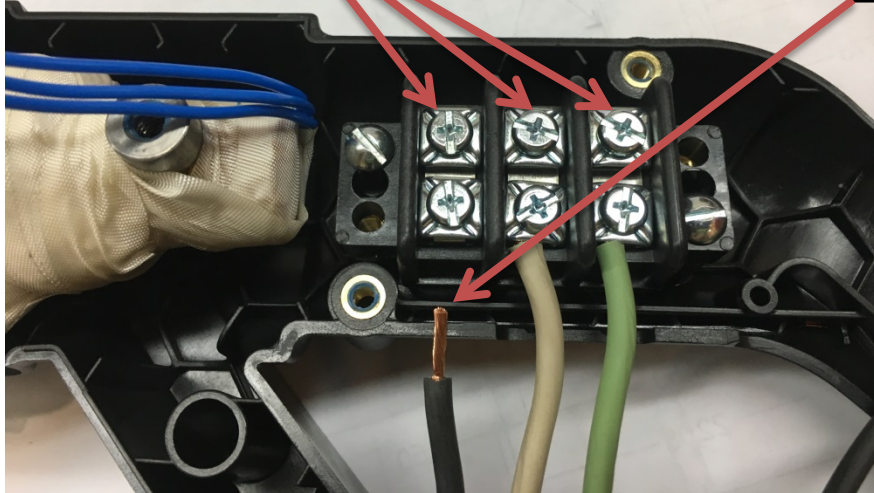


29001 pan head screws
2 needed

Connect Wires to Terminal Strip

Blue wires get connected the same way.

Each wire should be stripped back $\frac{1}{4}$ " , then bare strands of wire twisted, and placed under the screw clamp fully. Tighten screw to hold securely.

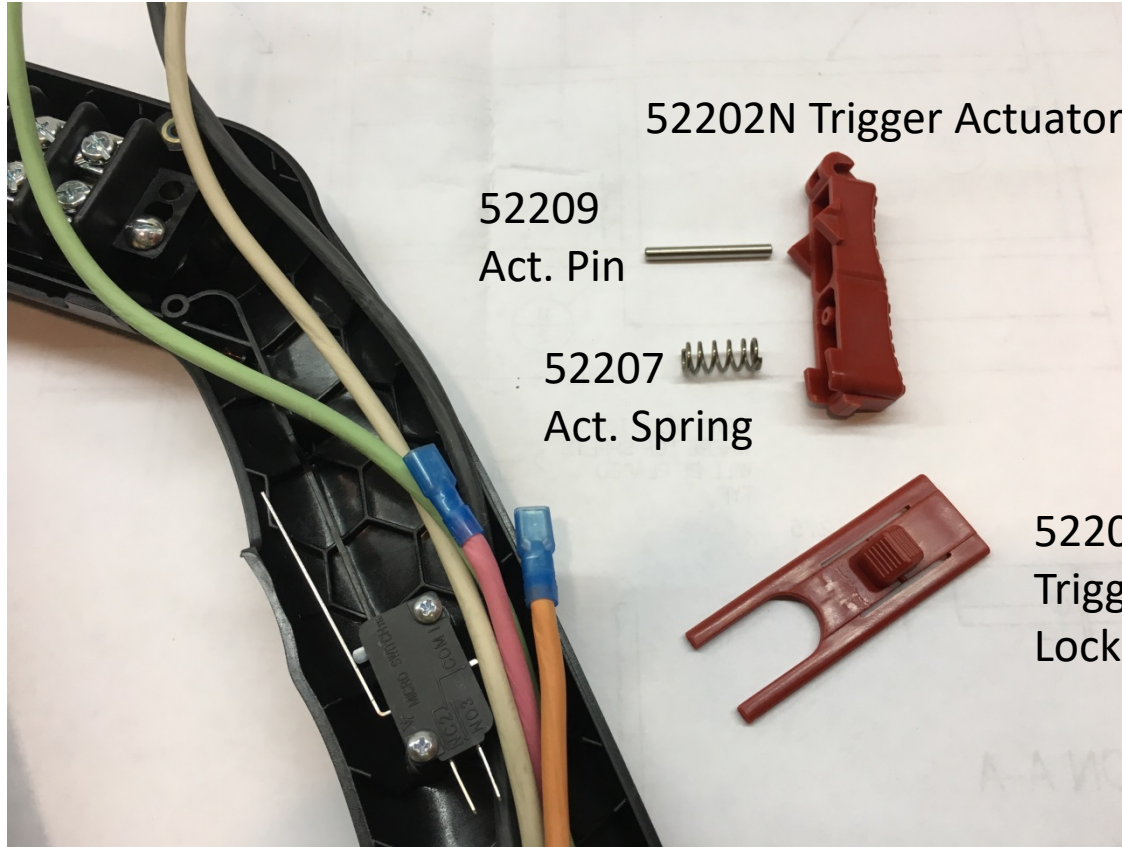


If your terminal strip does not have square clamps under the screws, contact Crafcro for a new 51656. There also shouldn't be soldered wires under the screw head.

Bend Wires Over the Screws



Trigger Actuator Parts



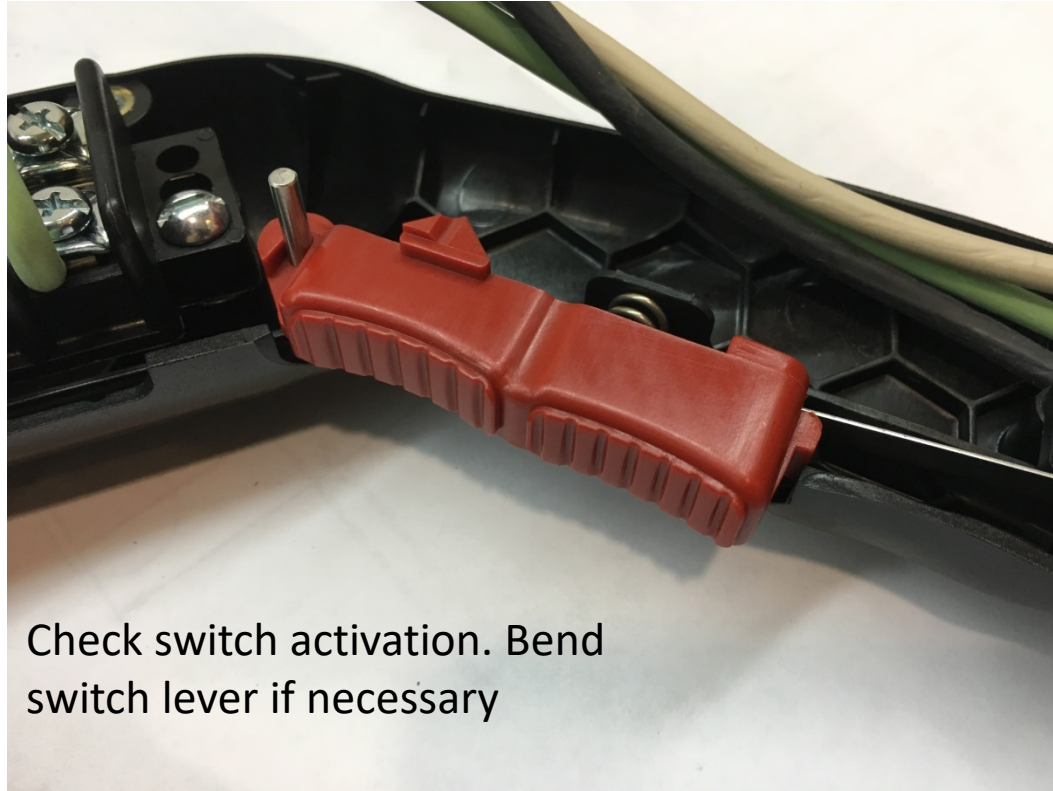
Insert Spring onto Post of Trigger Actuator



Slide Actuator and Spring into Place

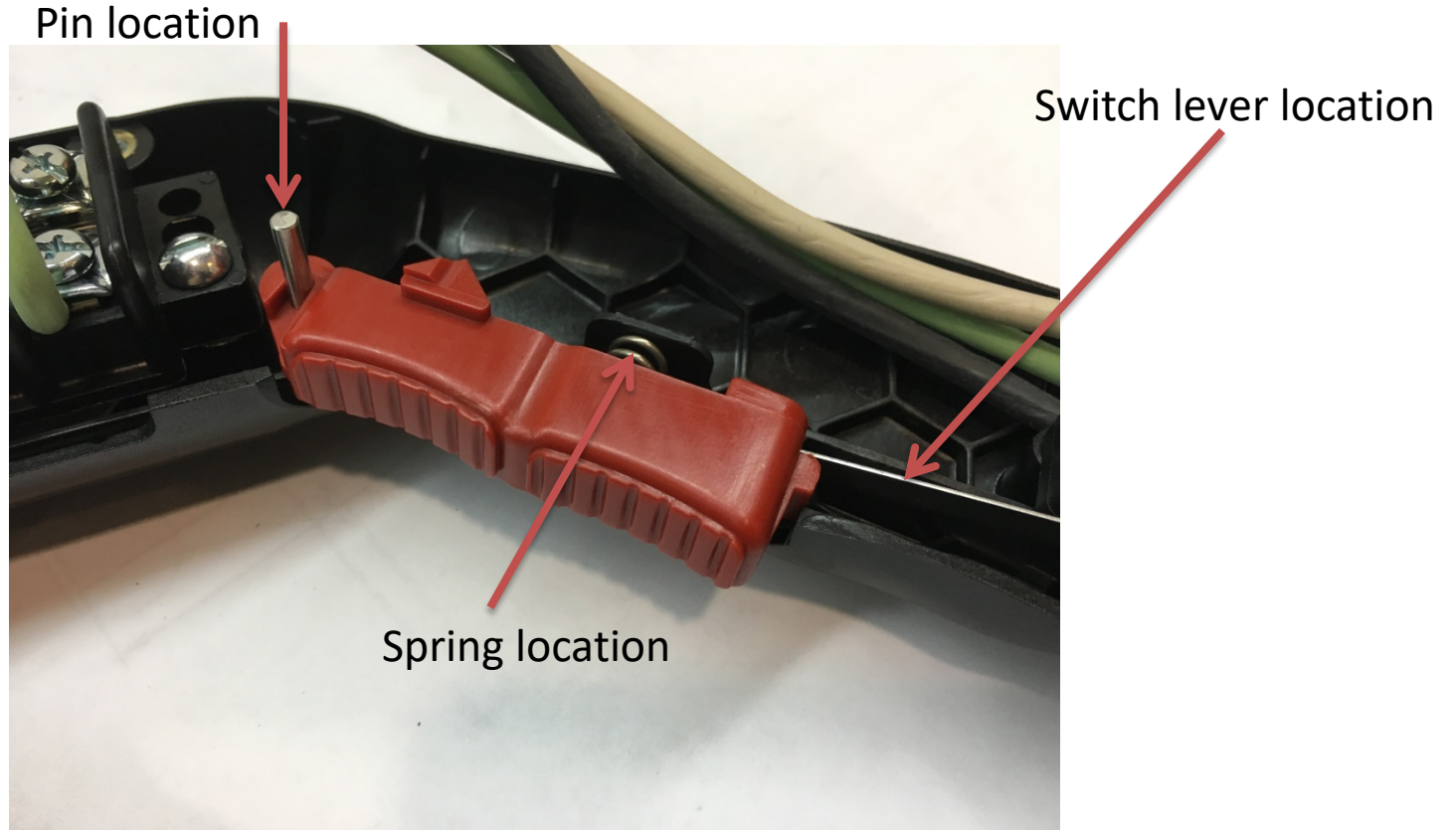


Install Pin

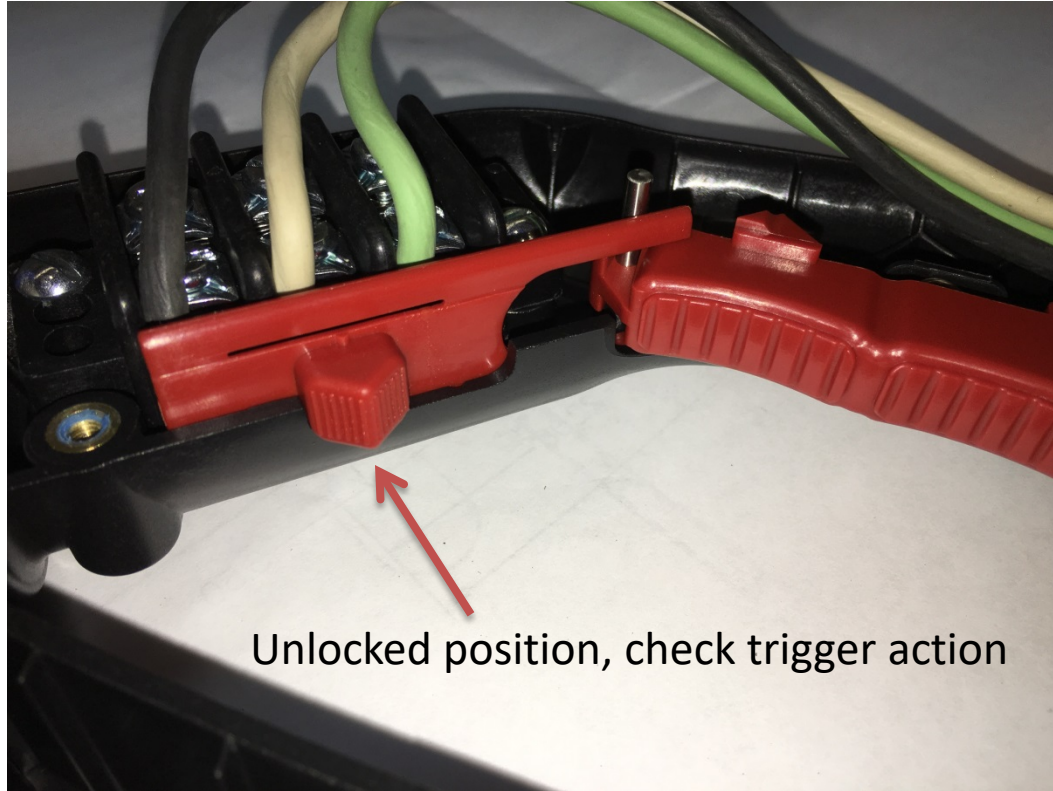


Check switch activation. Bend
switch lever if necessary

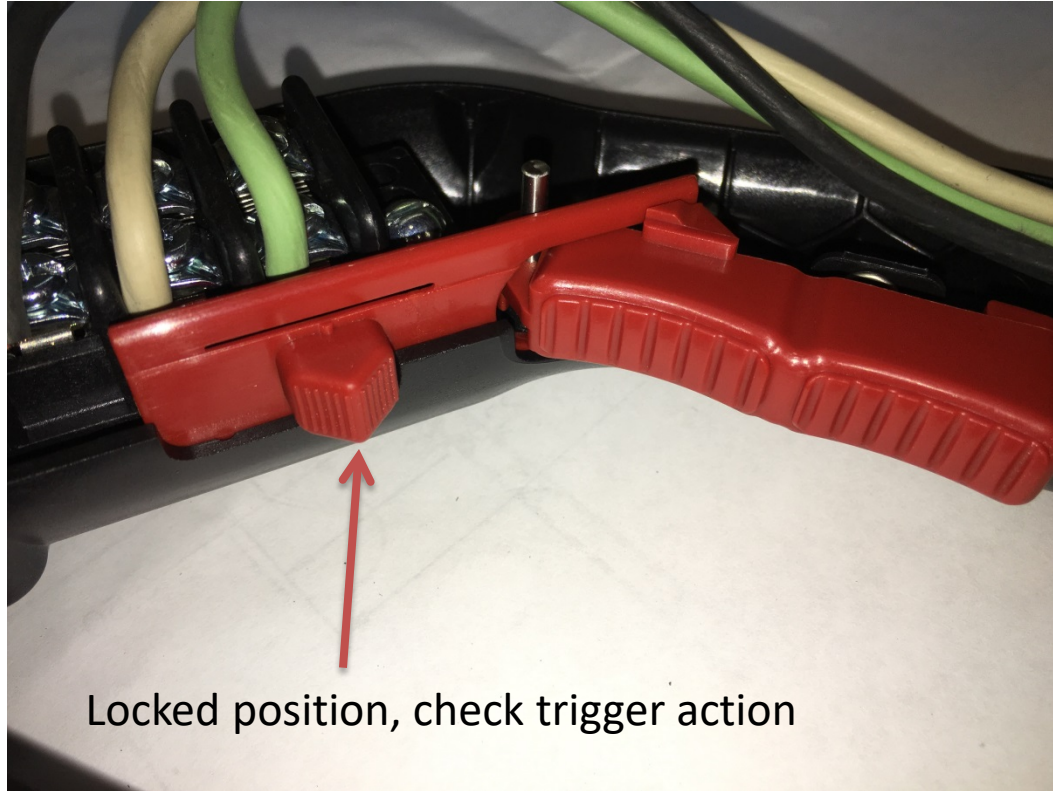
Important Locations for the Trigger Actuator



Install Trigger Lock



Trigger Locked



Locked position, check trigger action

Install Left Side Handle



Install Left Side Handle Screws



Apply Blue Thread
Locker to screws,
Torque to 22 In-lbs
(4) Larger Screws

Apply Blue Thread Locker
To Screws, Torque to 14 In-lbs
(7) Smaller screws

Threaded Tip Removal

- Use 2 wrenches.. 1 on hex part of wand, 1 on flats of tip, and loosen tip by turning Counter-Clock Wise.

